

GENERAL SERVICE INFORMATION

GROUP **00**

SECTION TITLE	PAGE	SECTION TITLE	PAGE
IDENTIFICATION CODES	00-01-1	MAINTENANCE AND LUBRICATION	00-03-1
LIFTING, JACKING, SPARE TIRE STOWAGE AND EMERGENCY TOWING	00-02-1	NOISE, VIBRATION AND HARSHNESS	00-04-1

SECTION 00-01 Identification Codes

SUBJECT	PAGE	SUBJECT	PAGE
DESCRIPTION		DESCRIPTION (Cont'd.)	
Official Vehicle Identification Number	00-01-1	Vehicle Certification Label	00-01-2
Vehicle Build Date	00-01-5	VEHICLE APPLICATION	00-01-1

VEHICLE APPLICATION

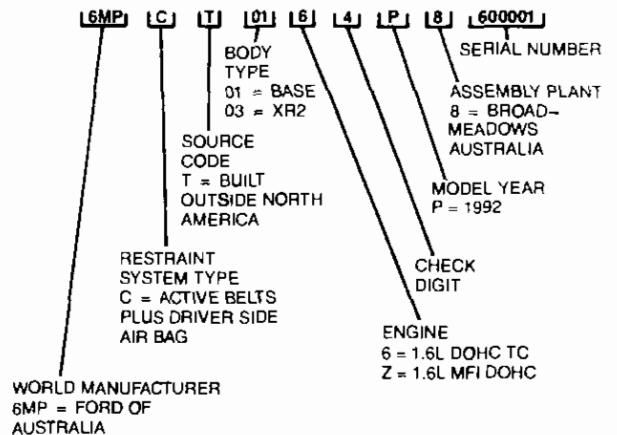
Capri.

DESCRIPTION

Official Vehicle Identification Number

The official Vehicle Identification Number (VIN) is stamped on a metal tab that is fastened to the instrument panel close to the windshield on the driver's side of the vehicle. The VIN is 17 digits and is visible from outside the vehicle.

The VIN is used for title and registration purposes and for warranty identification. The VIN indicates the manufacturer, type of restraint system, vehicle line, series, body type, engine, model year, assembly plant and production serial number. The serial number of each unit built is shown as the last six digits of the VIN.



Y4125-C

DESCRIPTION (Continued)

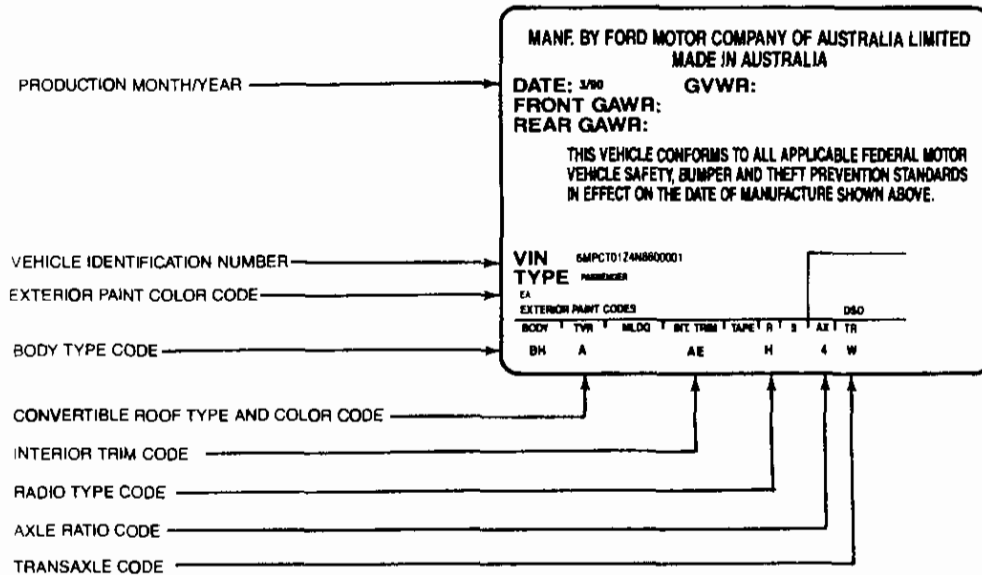
Vehicle Certification Label

The Vehicle Certification Label is affixed to the left hand door jamb below the latch striker. The upper half of the label contains the name of the manufacturer, month and year of manufacture, gross vehicle weight rating (GVWR), gross axle weight rating (GAWR), and the certification statement.

The Vehicle Certification Label also contains a 17 character vehicle identification number (VIN). This number is used for warranty identification of the vehicle and indicates: manufacturer, type of restraint system, vehicle line, model series, body type, engine, model year and consecutive unit number.

The remaining information on the Vehicle Certification Label consists of the following vehicle identification codes: exterior color, body type, convertible roof color, interior trim type and color, radio type, axle ratio and transmission type.

The following charts provide various codes and their respective identification.



CY4001-B

WORLD MANUFACTURER IDENTIFIER (VIN POSITIONS 1, 2 AND 3)

6MP CT01Z4P8600001

VIN Code	Manufacturer	Make	Type
6MP	Ford Motor Company of Australia, LTD	Mercury	Passenger Vehicle

CY4002-C

RESTRAINT SYSTEM TYPE (VIN POSITION 4)

6MP C T01Z4P8600001

VIN Code	Restraint System Description
C	Active Belts and Driver Air Bag

CY4003-C

DESCRIPTION (Continued)

**FORD PASSENGER VEHICLE IDENTIFIERS
(VIN POSITION 5)**

6MPC **T** 01Z4P8600001

VIN Code	Designation
T	All Passenger Vehicles Imported from Outside North America or Non-Ford Built Passenger Vehicles Marketed by Ford in North America

CY4004-C

**LINE, SERIES, BODY TYPE FOR PASSENGER VEHICLES
(VIN POSITION 6 AND 7)**

6MPCT **01** Z4P8600001

VIN Code	Line	Series	Body Type	Body Code
01	Mercury	Capri	2-Dr. Convertible	BH
03	Mercury	Capri XR2	2-Dr. Convertible	FF

CY4005-C

**ENGINE CODES
(VIN POSITION 8)**

6MPCT01 **Z** 4P8800001

VIN Code	Displacement	CID	Cylinders	Fuel	Manufacturer
Z	1.6 DOHC MFI	98	4	Gasoline	Mazda
6	1.6 DOHC MFI Turbo	98	4	Gasoline	Mazda

CY4006-C

**CHECK DIGIT FOR ALL VEHICLES
(VIN POSITION 9)**

6MPCT01Z **4** P8600001

CY4007-C

**VEHICLE MODEL YEAR
(VIN POSITION 10)**

6MPCT01Z4 **P** 8600001

VIN Code	Model Year
P	1993

CY4008-C

DESCRIPTION (Continued)

ASSEMBLY PLANT CODE
(VIN POSITION 11)

6MPCT01Z4P **8** 600001

VIN Code	Assembly Plant
8	Broadmeadows, Australia

CY4009-C

PRODUCTION SEQUENCE NUMBER
(VIN POSITIONS 12 THROUGH 17)

6MPCT01Z4P8 **600001**

Sequence Number	Sales Division
600,001 Through 999,999	Lincoln/Mercury Division

CY4010-C

EXTERIOR/INTERIOR COLOR CHART

EA
EXTERIOR PAINT COLORS

BODY	TVR	MLDG.	INT. TRIM	TAPE	R	S	AX	TR
BH	A		AE		H		4	W

Paint Code	Exterior Paint Color
EA	Cardinal Red
YA	Polar White
PG	Marine Blue C/C Met.
YB	Platinum C/C Met.
W3	Dark Charcoal C/C Met.
SF	Everglade Green C/C Met.
MZ	Stratosphere Blue

CY4011-C

BODY TYPE CODES

EA
EXTERIOR PAINT COLORS

BODY	TVR	MLDG.	INT. TRIM	TAPE	R	S	AX	TR
BH	A		AE		H		4	W

Body Code	VIN Code	Line	Series	Body Type
BH	01	Mercury	Capri	2-Dr. Convertible
FF	03	Mercury	Capri XR2	2-Dr. Convertible

CY4012-B

CONVERTIBLE ROOF TYPE AND COLOR IDENTIFICATION

EA
EXTERIOR PAINT COLORS

BODY	TVR	MLDG.	INT. TRIM	TAPE	R	S	AX	TR
BH	A		AE		H		4	W

Code	Convertible Roof Color
W	White
A	Black

CY4013-B

INTERIOR TRIM CODES

EA
EXTERIOR PAINT COLORS

BODY	TVR	MLDG.	INT. TRIM	TAPE	R	S	AX	TR
BH	A		AE		H		4	W

Code	Trim Color/Type
AE	Signal Cloth
BE	Zodiac Cloth
SE	Smooth Leather

CY4014-B

DESCRIPTION (Continued)

RADIO TYPE CODES

EA

EXTERIOR PAINT COLORS

BODY	TVR	MLDG.	INT. TRIM	TAPE	R	S	AX	TR
BH	A		AE		H		4	W

Code	Radio Type
Y	Radio Delete
F	AM/FM Electronic
H	AM/FM Electronic with Cassette
6	AM/FM Premium Sound with Cassette

CY4015-B

AXLE RATIO CODES

EA

EXTERIOR PAINT COLORS

BODY	TVR	MLDG.	INT. TRIM	TAPE	R	S	AX	TR
BH	A		AE		H		4	W

Code	Axle Ratio
4	4.11 W/DOHC MFI MTX
D	3.85 W/DOHC MFI Turbo MTX
B	3.84 W/DOHC MFI ATX

CY4016-C

TRANSMISSION CODES

EA

EXTERIOR PAINT COLORS

BODY	TVR	MLDG.	INT. TRIM	TAPE	R	S	AX	TR
BH	A		AE		H		4	W

Code	Transmission Type
W	5-Speed Manual — MTX
E	4-Speed Automatic Transaxle — 4EAT

CY4017-C

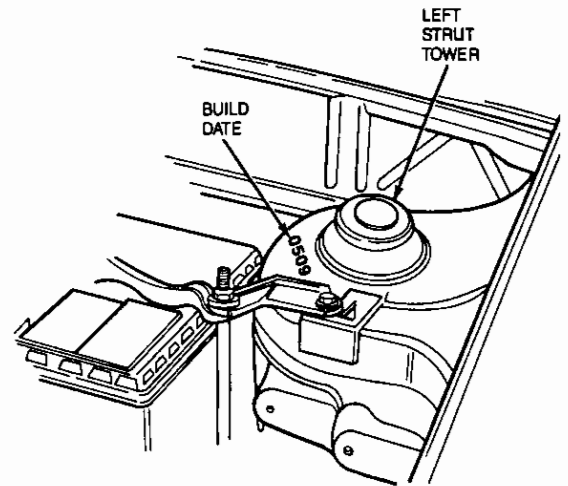
Vehicle Build Date

The build date is stamped on either strut tower in the engine compartment. The numbers are approximately 8mm high in red or yellow ink. The build date is a four-digit code which shows the month then the date but not the year. The year is shown in the VIN.

For example:

0509 = May 9th

1201 = December 1st



Y4477-A